

## Residential Canal Boat Cruises

**Residential cruises on our widebeam boat, Pirate Prince, offer hands-on, life-enriching opportunities for people of all ages and abilities to discover the waterways, gain life skills and learn more about themselves, the world around them and each other.**

With a focus on broadening horizons, working together and confidence building, these longer journeys allow passengers to escape inner-city London, bringing them up-close to the canals' unique history, engineering and surrounding wildlife as we cruise along at a relaxing four miles an hour. Groups are also encouraged to get involved with different aspects of canal boating, from learning the 'rules of the road' to working locks and steering (under the guidance of our National Community Boats Association-accredited skipper and crew), along with helping to prepare group meals and supporting each other whilst underway.

**Pirate Prince can accommodate groups of up to 10 passengers for residential trips (including Group Leaders) and is perfect for schools, organisations and charities working with young people, along with a wide range of community / support groups.**

Our modern, well-equipped boat has a kitchen with a full-sized gas cooker, grill and 4 hobs, sink with hot and cold water and a fridge, plus a fully-accessible toilet and shower wetroom. For ease of access there's also a hydraulic wheelchair lift, if required. During colder weather the boat can be heated by a solid-fuel stove or diesel boiler radiators.

Residential trips are available throughout the year (with the exception of January) and depart from / return to The Pirate Castle in Camden. Most trips depart between 10am - 11am and cruise for 4 - 5 hours before mooring up for the evening, when you can arrange your own activities, visit local shops, restaurants or amenities - or simply relax together.

### 2025 Pricing

2 days with 1 overnight stay = £900 (discounted to £780 for smaller charities / community groups). A surcharge of £20 per night will be applied for overnight stays on Fridays, Saturdays and / or Sundays.

3 days with 2 overnight stays = £1,350 (discounted to £1,170 for smaller charities / community groups). A surcharge of £20 per night will be applied for overnight stays on Fridays, Saturdays and / or Sundays.

We're happy to help fellow charities fundraise for future residential trips, especially those improving the life chances of young people, vulnerable groups and people with low / moderate physical, mental and / or sensory support needs. Contact [Kal, our Development Manager](#) [1] to discuss.

**For more information or to book, please [email us](#) [2] or call 020 72676605 to speak with a member of the team.**

We look forward to welcoming you aboard!

[Residential Canal Boat Cruise Itineraries](#) [3]

[Terms and Conditions](#) [4]

[Kit list for boaters](#) [5]

[Safety on board](#) [6]

[Things you need to know about boat hire](#) [7]

# Residential Canal Boat Cruises

Published on The Pirate Castle website (<https://www.thepiratescastle.org.uk>)

---



[8]



[9]



[10]



[11]

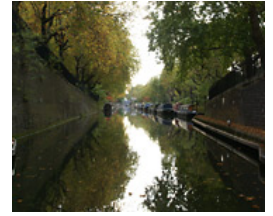


[12]

# Residential Canal Boat Cruises

Published on The Pirate Castle website (<https://www.thepiratescastle.org.uk>)

---



[13]



[14]



[15]



[16]



[17]

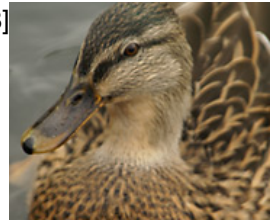
# Residential Canal Boat Cruises

Published on The Pirate Castle website (<https://www.thepiratescastle.org.uk>)

---



[18]



[19]



[20]



[21]



[22]

# Residential Canal Boat Cruises

Published on The Pirate Castle website (<https://www.thepiratescastle.org.uk>)

---



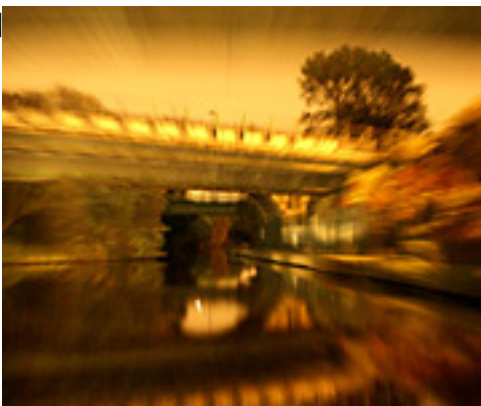
[23]



[24]



[25]



[26]



[27]

## Residential Canal Boat Cruises

Published on The Pirate Castle website (<https://www.thepiratescastle.org.uk>)

---



[28]



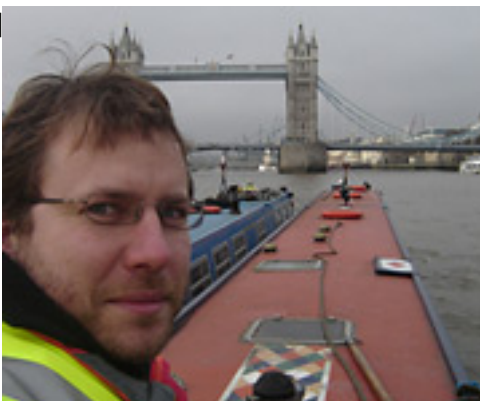
[29]



[30]



[31]



[32]

---

Source URL: <https://www.thepiratescastle.org.uk/residential-canal-boat-cruises>

Links

---

## Residential Canal Boat Cruises

Published on The Pirate Castle website (<https://www.thepiratescastle.org.uk>)

---

[1] <mailto:kal@thepiratescastle.org> [2] <mailto:info@thepiratescastle.org> [3] <https://www.thepiratescastle.org.uk/?q=node/44> [4] <https://www.thepiratescastle.org.uk/?q=termsandconditions> [5] <https://www.thepiratescastle.org.uk/?q=node/12> [6] <https://www.thepiratescastle.org.uk/?q=node/13> [7] <https://www.thepiratescastle.org.uk/?q=node/92> [8] [https://www.thepiratescastle.org.uk/pics/bacon-sandwich---nb-residetial\\_big.jpg](https://www.thepiratescastle.org.uk/pics/bacon-sandwich---nb-residetial_big.jpg) [9] [https://www.thepiratescastle.org.uk/pics/canal-boating\\_big.jpg](https://www.thepiratescastle.org.uk/pics/canal-boating_big.jpg) [10] [https://www.thepiratescastle.org.uk/pics/canal-boating-2\\_big.jpg](https://www.thepiratescastle.org.uk/pics/canal-boating-2_big.jpg) [11] [https://www.thepiratescastle.org.uk/pics/Canal-boating-3\\_big.jpg](https://www.thepiratescastle.org.uk/pics/Canal-boating-3_big.jpg) [12] [https://www.thepiratescastle.org.uk/pics/canal-boating-4\\_big.jpg](https://www.thepiratescastle.org.uk/pics/canal-boating-4_big.jpg) [13] [https://www.thepiratescastle.org.uk/pics/Canal-boating-6\\_big.jpg](https://www.thepiratescastle.org.uk/pics/Canal-boating-6_big.jpg) [14] [https://www.thepiratescastle.org.uk/pics/Canal-boating-7\\_big.jpg](https://www.thepiratescastle.org.uk/pics/Canal-boating-7_big.jpg) [15] [https://www.thepiratescastle.org.uk/pics/Canal-boating-8\\_big.jpg](https://www.thepiratescastle.org.uk/pics/Canal-boating-8_big.jpg) [16] [https://www.thepiratescastle.org.uk/pics/Canal-boating-9\\_big.jpg](https://www.thepiratescastle.org.uk/pics/Canal-boating-9_big.jpg) [17] [https://www.thepiratescastle.org.uk/pics/Canal-boating-10\\_big.jpg](https://www.thepiratescastle.org.uk/pics/Canal-boating-10_big.jpg) [18] [https://www.thepiratescastle.org.uk/pics/Canal-boating-residential-2\\_big.jpg](https://www.thepiratescastle.org.uk/pics/Canal-boating-residential-2_big.jpg) [19] [https://www.thepiratescastle.org.uk/pics/Canal-boating-residential-5\\_big.jpg](https://www.thepiratescastle.org.uk/pics/Canal-boating-residential-5_big.jpg) [20] [https://www.thepiratescastle.org.uk/pics/canal-boat-residential\\_big.jpg](https://www.thepiratescastle.org.uk/pics/canal-boat-residential_big.jpg) [21] [https://www.thepiratescastle.org.uk/pics/Canal-boat-residential-8\\_big.jpg](https://www.thepiratescastle.org.uk/pics/Canal-boat-residential-8_big.jpg) [22] [https://www.thepiratescastle.org.uk/pics/Canal-boat-residential-9\\_big.jpg](https://www.thepiratescastle.org.uk/pics/Canal-boat-residential-9_big.jpg) [23] [https://www.thepiratescastle.org.uk/pics/Canal-boat-residential-10\\_big.jpg](https://www.thepiratescastle.org.uk/pics/Canal-boat-residential-10_big.jpg) [24] [https://www.thepiratescastle.org.uk/pics/canal-boat-residential-11\\_big.jpg](https://www.thepiratescastle.org.uk/pics/canal-boat-residential-11_big.jpg) [25] [https://www.thepiratescastle.org.uk/pics/canal-boat-residential-12\\_big.jpg](https://www.thepiratescastle.org.uk/pics/canal-boat-residential-12_big.jpg) [26] [https://www.thepiratescastle.org.uk/pics/canal-boat-residential-13\\_big.jpg](https://www.thepiratescastle.org.uk/pics/canal-boat-residential-13_big.jpg) [27] [https://www.thepiratescastle.org.uk/pics/canal-boat-residetial-7\\_big.jpg](https://www.thepiratescastle.org.uk/pics/canal-boat-residetial-7_big.jpg) [28] [https://www.thepiratescastle.org.uk/pics/cnal-boating-residential-3\\_big.jpg](https://www.thepiratescastle.org.uk/pics/cnal-boating-residential-3_big.jpg) [29] [https://www.thepiratescastle.org.uk/pics/Country-canal-boat-residential\\_big.jpg](https://www.thepiratescastle.org.uk/pics/Country-canal-boat-residential_big.jpg) [30] [https://www.thepiratescastle.org.uk/pics/cows-nb-residential\\_big.jpg](https://www.thepiratescastle.org.uk/pics/cows-nb-residential_big.jpg) [31] [https://www.thepiratescastle.org.uk/pics/DSC00803\\_big.jpg](https://www.thepiratescastle.org.uk/pics/DSC00803_big.jpg) [32] [https://www.thepiratescastle.org.uk/pics/narrow-boating-thames\\_big.jpg](https://www.thepiratescastle.org.uk/pics/narrow-boating-thames_big.jpg)